



Incredible Creatures By Design

Formed by Evolution OR Created/Designed by God?

Dr. Heinz Lycklama

heinz@osta.com

HeinzLycklama.com/messages



“The world in which we live is truly an amazing and wondrous place.”

Scott Huse, *The Collapse of Evolution*

By Chance, Law or Design?





Incredible Creatures

- What does the Bible say about the Creation of creatures?
 - Gen. 1: 11(1), 12(2), 21(2), 24(2), 25(3)
 - “according to its kind” used 10 times
- What do we find in the fossil record?
- Let’s look at some of these creatures
 - Any evidence that creatures evolved?
 - Do creatures appear to be designed? By whom?
- Is Evolution really true?
- Is God the Designer/Creator of these incredible creatures?



Creation of Distinct Kinds

- **Gen. 1: 11(1), 12(2), 21(2), 24(2), 25(3)**
- Ten major categories of organic life created “after its kind”
 - Plant kingdom - grass, herbs, fruit trees
 - Animal kingdom - sea monsters, other marine animals, birds, beasts, cattle, crawling animals
 - Man “kind”
- One kind cannot transform itself into another kind
 - Definite and distinct categories
 - There is variation within a kind, e.g. dogs, cats
 - These “kinds” are still recognized today



The Fossil Record

- The “Cambrian Explosion”
- “Living” fossils
- Polystrate fossils
- Lack of empirical evidence for transitions
 - The archaeopteryx was a bird, not a transitional fossil between reptile and bird
 - Whale “evolution” debunked
 - Horse “evolution” debunked
- “Inverted” fossil orders
- No credible “ape-like to human” fossil identified

Cambrian Explosion

- Cambrian layer contains fossils of most Phyla known to man
- Only soft-bodied organisms (e.g. worms) found in pre-Cambrian strata
- Number of species fossilized in higher layers decreases in each higher layer

| THE GEOLOGIC COLUMN | | | Typical fossils |
|---------------------|---------------|-----------------------|-----------------|
| Eras | Periods | Millions of Years Ago | |
| MESOZOIC | QUATERNARY | 2 | |
| | TERTIARY | 65 | |
| MESOZOIC | CRETACEOUS | 130 | |
| | JURASSIC | 180 | |
| | TRIASSIC | 225 | |
| PALAEOZOIC | PERMIAN | 275 | |
| | CARBONIFEROUS | 345 | |
| | DEVONIAN | 405 | |
| | SILURIAN | 435 | |
| | ORDOVICIAN | 480 | |
| | CAMBRIAN | 600 | |
| | PRE-CAMBRIAN | | |

“Living Fossils”

- Coelacanth fish
 - “Extinct” about “70 million years” ago
 - Live fish found in 1938
- “25-million-year-old” termite fossils in amber
 - Identical to termites living today
 - Darwin predicted that fossils would show changes in fossil record over the years



The “325 million year old” lobe-fin coelacanth is still very much alive.



Polystrate Fossils



Polystrate fossils run through several strata (rock/sediment layers)



Trees sinking in an upright position in Spirit Lake following Mount St. Helen's eruption



Quote From West [Evolutionist]

“Contrary to what most scientists write, the fossil record does not support the Darwinian theory of evolution because it is this theory (there are several) which we use to interpret the fossil record. By doing so, we are guilty of circular reasoning if we then say the fossil record supports this theory.”

[Ronald R. West (Evolutionist), “Paleontology and Uniformitarianism.” *Compass*, Vol. 45 (May 1968), p. 216.]



Evolution: The Fossils Still Say No!

“In the preceding chapters, we have cited example after example of failure to find transitional forms where evolutionary theory predicts such forms should have been found. ... The examples cited in this book are in no way exceptions, but serve to illustrate what is characteristic of the fossil record.”

[Duane T. Gish (Creationist), *Evolution: The Fossils Still Say NO!*, page 333.]

Some Incredible Creatures

- Cheetah, Giraffe
- Octopus, Weddell seal
- Archerfish, Decoy fish, Anglerfish
- Cicada insect, Sea slug
- Gardening ants
- Symbiotic cleaning relationship
- Water beetle
- Metamorphosis of the butterfly
- Migratory feats of birds
- Mysteries of the human body (cell, eye)



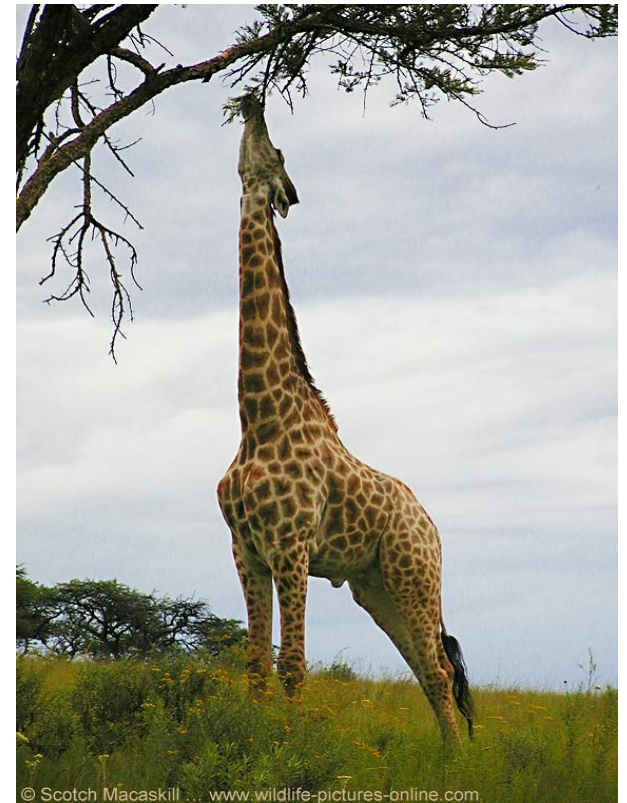
The Cheetah

- Cheetah cat can run at up to 70 mph over a distance of 700 yards or more
- Cheetah can reach 45 mph in 2 seconds!
- Cheetah is the fastest land animal



The Giraffe

- Ten ft. high at the shoulder
- Eight foot neck
- Seven neck bones
- Huge heart to deliver blood to the brain
- Large lungs (8 * human)
- Slow air intake



Giraffe - 2

- Reinforced artery walls
- By-pass and anti-pooling valves
- Web of small blood vessels
- Pressure-sensing signals
- Engineered for survival
- Defies explanation by evolution!



Eight-Armed Octopus

- Eight-armed, ink-shooting octopuses
 - Jet-propelled and fast swimmer
 - Shoots ink to create smoke screen and dull a predator
 - Can re-grow an arm if it loses one



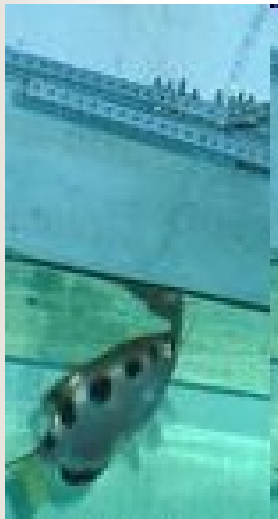
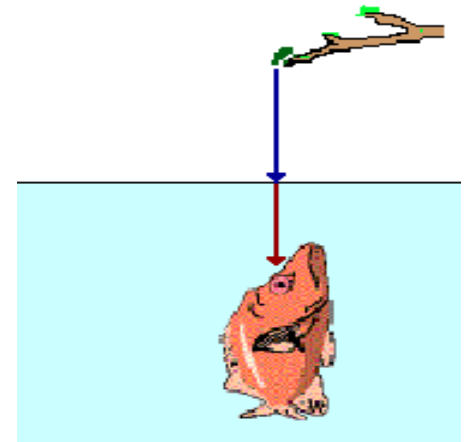
The Weddell Seal

- Weddell seals that can remain underwater for 45 minutes
 - Dive to depths of 1500 feet



The Archerfish

- Archerfish that can shoot water 15 feet into the air and hit a bug
 - Mouth at surface
 - Eyes underwater



Decoy Fish

- Lives in waters near Oahu, Hawaii
- Uses dorsal fin as a lure
 - Goes up and appears to be a separate smaller fish, complete with “mouth” and “eye”
 - Ceases its gill movements
 - Stops breathing
 - Lure turns deep red color
- Part attaching lure to fish body becomes transparent
- Moves decoy side to side, remaining still
 - “Mouth” opens and closes
- Fish snaps up victim when within reach





Anglerfish

- A - uses “lure” at end of moveable “fishing pole” suspended over mouth
- B – has “fishing rod” coming out of its back with luminescent “bulb” at end of it
- C – deep-sea angler has “light bulb” hanging from roof of its mouth (dangling)
- D – simulates movement of real shrimp
 - May move in quick backward-darting motion
 - If “bait” gets nipped off, grows back “bait” within a few days, fully replaced within two weeks

Cicada Insect

- About 2500 species exist
- One (magicicada) can live underground for 13 to 17 years
- Does not bite or sting and not a pest
- Make a real racket when they emerge





The Sea Slug

- Lives along seacoast within tidal zone
- Feeds primarily on sea anemones
- Anemones are equipped with 1000's of small stinging cells on their tentacles
 - Cells explode at slightest touch
 - Plunge poisoned harpoons into “would-be” intruders
 - Speared intruder is paralyzed and drawn into the anemone's stomach to be digested



The Sea Slug - 2

- Sea slug is not stung
- Undigested stinging cells are swept along through ciliated tubes that are connected to the stomach and end in pouches
- Stinging cells are arranged and stored in the pouches to be used for sea slug's defense!
- Whenever attacked, sea slug defends itself using the stinging cells
- Defies evolutionary explanation!



Gardening Ants

- Bull's Horn Acacia tree of South America furnished with large hollow thorns
 - Inhabited by ferocious stinging ants
- Small bumps on tree supply food to ants
- Tree receives complete protection from all animal predators and plant competitors
- Ants viciously attack all intruders
- Ants are gardeners and nip off any green shoot that shows its head near their tree
- When all ants are removed from one of these trees, tree dies within 2 to 15 months

Cleaning Symbiosis

- Certain fish feed on smaller fish and shrimp
- Their mouths become littered with debris and parasites
- Larger fish pay visit to “cleaning station” and opens its mouth and gill chambers
- Little “cleaner” fish and shrimp swim in and “do their job”
- “Win-win” for both parties
- Also practiced by Egyptian plover bird in cleaning out parasites from Nile river crocodile



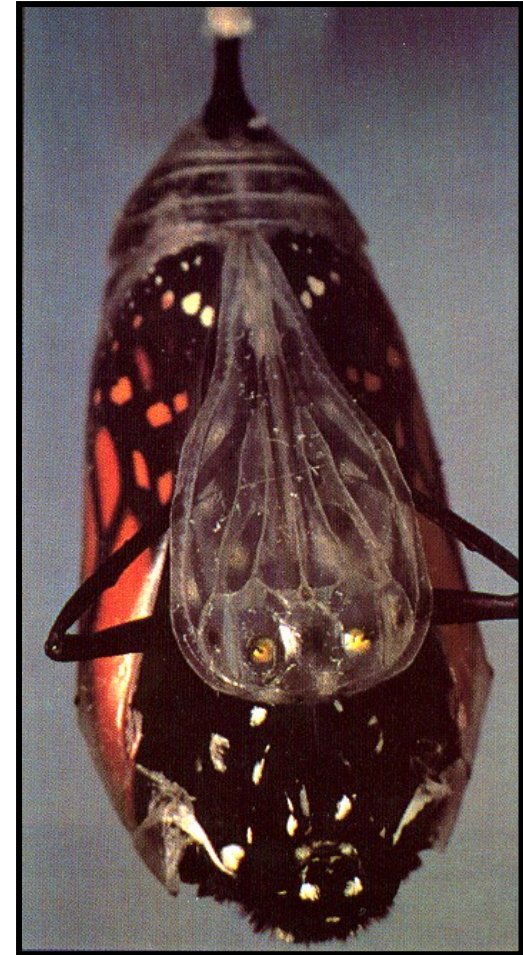
Water Beetle

- Defends against enemies by secreting a detergent substance from a gland
- Propels beetle forward quickly out of immediate danger
- Detergent causes the surface tension of water to break down
- Pursuing insect sinks into the water



O Lord, how manifold are Thy works! In wisdom hast thou made them all: the earth is full of Thy riches” Ps. 104:24.

Metamorphosis of the Butterfly



Migratory Instincts

- White-throated warbler
 - Summers in Germany
 - Winters in Africa
 - Parent birds take off for Africa at end of Summer as young birds become more independent
 - Young birds take off a few weeks later, flying instinctively across 1000's of miles of unfamiliar land and sea to rejoin their parents
- Brains of birds have inherited knowledge
 - Can tell latitude, longitude and direction by the stars
 - Have “calendar”, clock and navigational data



Alaskan Golden Plover

- Born in Alaska
- 26 days of incubation
- After a few months, parents fly to Hawaii
- 4500 Km from Alaska to Hawaii
- Average weight of bird is 140 grams
- Put on 70 more grams of weight as fuel



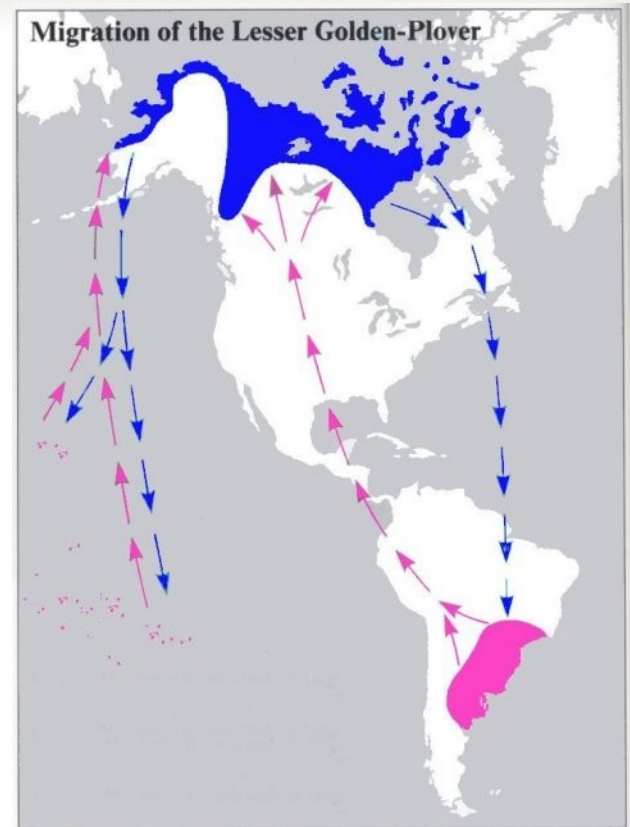


Alaskan Golden Plover - 2

- Takes 88 hours to fly to Hawaii
 - At a rate of 51 Km/hour
- All over open water, without a break
- Takes 250,000 wing flaps
- Fly through fog, rain, sunshine, starlight, overcast skies
- Requires 0.6% of body weight per hour
 - All fuel exhausted in 72 hours
 - Flying in V-formation saves 22% of energy

Other Migratory Feats

- Canadian Golden plover bird
 - Travels 8000 miles south from Hudson Bay
 - Crosses 2000 miles of sea from Nova Scotia to Caribbean countries
 - Winters in Argentina
 - Returns by way of Central America and the Mississippi Valley
- Barn swallow
 - Migrates 9000 miles from Northern Canada to Argentina
- Artic tern migrates 14000 miles, pole to pole and back
- Others – whales, fur seals, bats, salmon, turtles, etc.



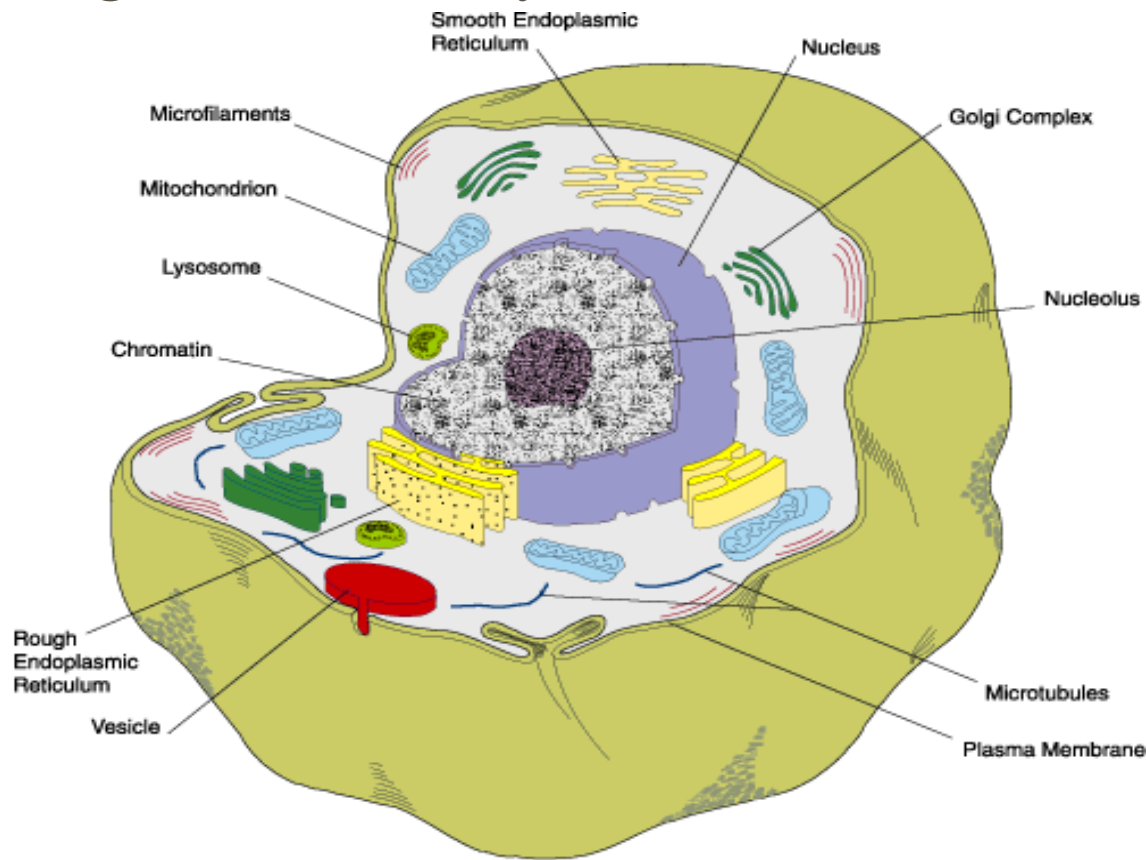


The Evolutionist is Baffled!

- Remarkable migratory abilities cannot evolve piecemeal through mere chance
- Requires directing intelligence
- Migratory instincts are useless unless perfect
- Navigating perfectly across only half of an ocean does not help
- These animals were carefully created and designed with these instincts

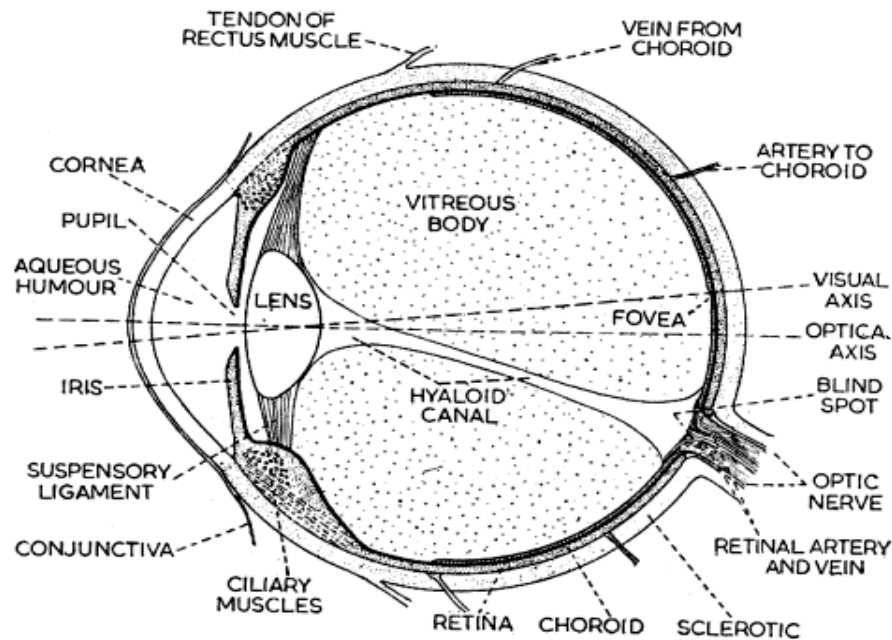
Cell Structure

- Average human body contains 75+ trillion cells



The Human Eye

- Staggering complexity
- Can't be explained by step-by-step random mutation and selection





Functions of The Human Eye

- Automatic aiming, focusing, aperture adjustment
- Functions from almost complete darkness to bright sunlight
- Can see a fine hair
- Makes about 100,000 separate motions per day
- Provides us a continuous series of color stereoscopic pictures
- All performed without complaint
- Carries out its own maintenance while we sleep



Evolution Cannot Explain

- More features of God's incredible creatures:
 - Visual beauty – where from? why?
 - Exhibited by fish deep in the sea
 - Mimicry – how did it develop?
 - One type of organism imitates/mimics another type
 - e.g. spiders disguising as ants (8 legs vs. 6 legs)
 - Angler fish
 - Convergence (similar organs/structures)
 - Sonar systems in bat and porpoise
 - Wing mechanisms “evolved” separately in insects, bats, flying reptiles, birds
- No evolutionary mechanism can explain this!



What Did We Learn?

- Looking at these Creatures
 - Any evidence that creatures evolved?
 - Do creatures appear to be designed?
 - If designed, then by whom?
- God is the Designer/Creator of these incredible creatures!
- Is Evolution really true? **NO**



God's Creatures Are Designed

- Creatures are created
 - Creation requires a Creator
 - God is The Creator
- Creatures are designed
 - Cannot be explained by Evolution
 - Are designed for a purpose
 - God created creatures for our enjoyment
- We are created by God in His image
 - To worship Him
 - To enjoy His fellowship



More Information

- ICR – Institute for Creation Research
 - icr.org
 - Acts and Facts articles on Creation
- Answers in Genesis
 - answersingenesis.org
 - Books, seminars, articles on Creation
- Creation Research Society
 - creationresearch.org
 - Publication of peer-reviewed creation articles
- Dr. Heinz Lycklama's Lectures
 - HeinzLycklama.com/creation & HeinzLycklama.com/apologetics
- True Origin Archive
 - trueorigin.org
 - Exposing the myth of evolution



**Thank you
for your
attention!**

Dr. Heinz Lycklama

heinz@osta.com

HeinzLycklama.com/creation

HeinzLycklama.com/apologetics

HeinzLycklama.com/messages