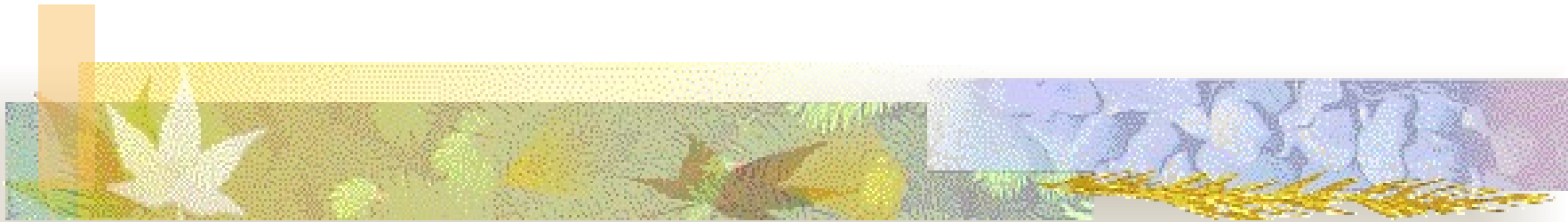


Evidence For a Young World



Dr. Heinz Lycklama

heinz@osta.com

HeinzLycklama.com/creation



Which Model Best Fits The Facts?

- Creation and Evolution are the only two models of origins
- Both models should be considered as equal alternatives and evaluated objectively in terms of their relative abilities to correlate and explain scientific data
- **The model that incorporates the most data and has the smallest number of unresolved issues is the most likely to be true**



Looking At The Scientific Evidence

- Origin of matter, energy and natural law
- Origin of the solar system
- Teleology – study of evidences of design in nature, e.g. Anthropic Principle
- Classification of biological organisms
- Natural selection and mutations (vestigial organs)



The Scientific Evidence - 2

- Origin of man
- Origin of life – probability
- The fossil record
- Geologic ages – Uniformitarianism vs. Catastrophism
- Age of the world (earth/universe)

Keeping Score

	<u>Creation</u>	<u>Evolution</u>
Geologic Ages	★	
TOTAL =	9	0



Evidence for a Young World

- The “age” issue
- Physical processes
- Biblical genealogy
- Human population
- Mitochondrial DNA Sequencing
- Radioactive dating
- Geologic ages
- Evidence for young earth
- Evidence for young universe



The “Age” Issue

- Different views:
 - Materialistic evolution -> old world
 - Theistic evolution -> old world
 - Creation -> young world
- Old world theory assumes:
 - Big bang
 - Long ages
 - Genesis flood a myth
 - Sin not the cause of death



Background

■ Evolution model:

- Age of universe at 10-20 billion years
- Age of earth is 4-5 billion years

■ Creation model:

- Young earth -> 6-15 thousand years old
- Old earth -> same as evolution model

■ How to reconcile the ages?

- “Evidence” of old age
- The six days of creation



What We Do Know

- The “six days” describe history since the Bible is trustworthy and God does not lie
- Biological macro-evolution is impossible
- Stellar evolution seems unlikely
- The universe really is very big (billions of light years in extent)
- The Earth was specially created by God for mankind
- God exists outside of time



Creation Model

- The six days of Genesis 1 are 24 hours each
- The Earth is 6-15 thousand years old
- The Earth was created for mankind
- Individual “kinds” of plants and animals were created directly by God in mature state
- There was no death before the sin of Adam
- God cursed the creation because of man’s sin
- Noah’s flood was violent, covering the whole earth, and largely forming the geologic column



Evolution Model

- Requires Long ages
- Cannot explain the origin of matter
- Cannot explain the origin of life
- Cannot explain the origin of information
- Cannot explain how one species could evolve into a new species
- Is a constantly changing model
- Continues to use false and misleading information as support



Comparison of Models

■ Creation model:

- Biblical genealogy -> age of ~6000 years
- Break in genealogy at time of Peleg? **Gen. 10:25**, “... at the time of the division of the earth ...” -> > 10,000 years

■ Evolution model:

- Earth assumed to be 50M years in early 1900's
- Earth now assumed to be 5B years, factor of 100 more
- Assumptions change with time -> new scientific models



Assumptions Made by Evolutionists

“... evolutionists deduce great age for the universe”

- The vast distances assigned to the stars are real
- They know for certain how light travels in deep space
- Light has always traveled at the same speed throughout the history of the universe
- The universe could not have been created “fully functioning” with people on earth seeing stars with the light already arriving from the beginning



What We Need to Remember

“Light years” does not seem to agree with a recent Creation.”

- We do not observe an old universe, we observe certain facts
- We can only deduce an age from these facts if we make certain assumptions (=starting beliefs)
- We need to look at each of these assumptions with great humility
- We do not have infinite knowledge - only God does
- The history of science shows that what seems certain in one generation may be totally blown away by new information in the next
- We have seen example after example where the Bible is shown to be right after all

Hundreds of Physical Processes Set Limits on the Age of the World

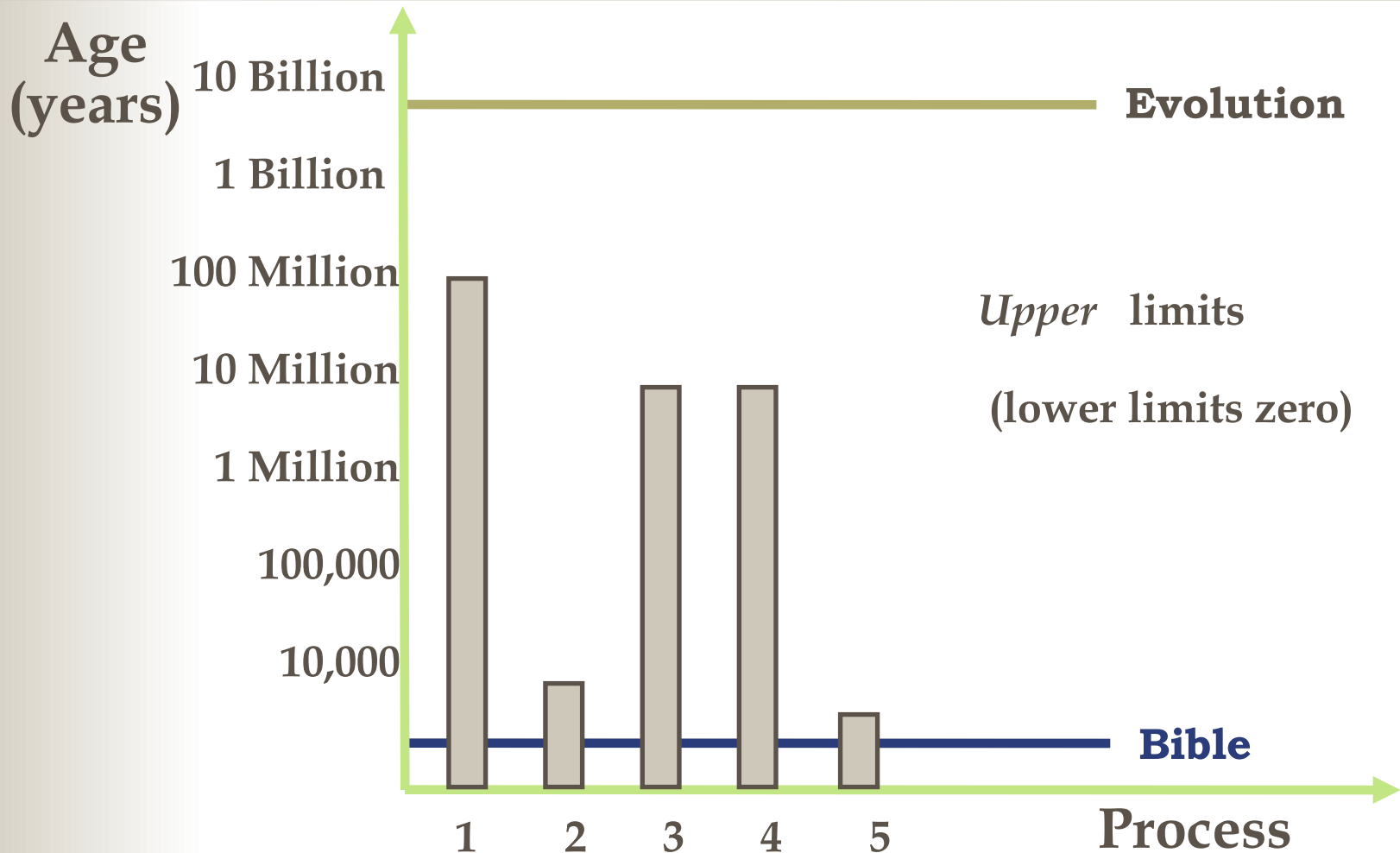
- | | | |
|-----------------------------|---------------------------------|------------------------------|
| 1. Helium in atmosphere | 21. Coral reef growth | 41. Peat bog growth |
| 2. Helium in ground | 22. Oldest living plants | 42. Multi-layer fossils |
| 3. Meteor dust | 23. Human civilizations | 43. Hardening of rocks |
| 4. Buildup of carbon 14 | 24. River delta growth | 44. Decay of Saturn's rings |
| 5. Human population | 25. Undersea oil seepage | 45. Potassium in the sea |
| 6. Natural plutonium | 26. Uranium in sea | 46. Titan's methane loss |
| 7. Sodium in sea | 27. Neutrons and lead | 47. Internal heat of Io |
| 8. Sediment in sea | 28. Rotation of spiral galaxies | 48. Leaching of chlorine |
| 9. Erosion of continents | 29. Interstellar gas expansion | 49. Radiogenic lead |
| 10. Earth's magnetic field | 30. C-14 in meteorites | 50. Niagra Falls erosion |
| 11. Oil leaks in earth | 31. Decay of comets | 51. Stone age burials |
| 12. Natural gas in earth | 32. Interplanetary dust removal | 52. Seafloor calcareous ooze |
| 13. Orphan radiohalos | 33. Lifetime of meteor showers | 53. Uranium decay |
| 14. Neutrons and strontium | 34. Dust on the moon | 54. Squashed radiohalos |
| 15. Decay of rock magnetism | 35. Slowing of earth's rotation | 55. Young water to sea |
| 16. Tight bends in rocks | 36. Heat loss from earth | 56. Magma to earth's crust |

*More than 90 % of these processes
give an age less than billions of years*

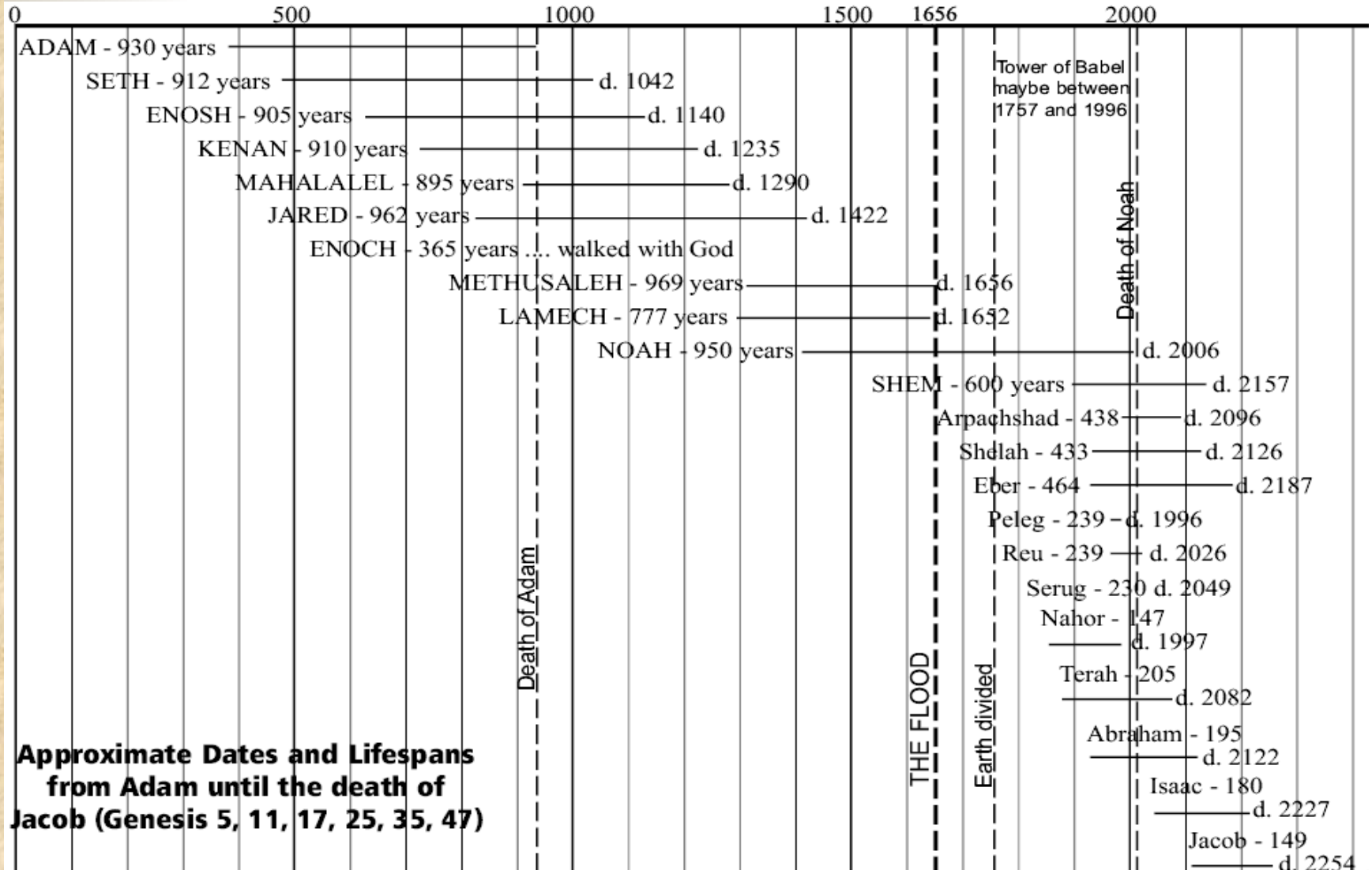
Some Indicated Earth Ages

Process	Age (Years)
Decay of earth's magnetic field	10,000
Influx of radiocarbon to earth system	10,000
Growth of oldest living part of biosphere	5,000
Origin of human civilizations	5,000
Human population growth rates	4,500
Decay of C14 in pre-Cambrian wood	4,000
Formation of river deltas	5,000
Influx of meteoritic dust from space	Very small
Accumulation of dust on the moon	200,000
Influx of nickel to the ocean via rivers	9,000
Influx of magnesium to the ocean via rivers	45,000,000
Maximum life of meteor showers	5,000,000

The Processes Put *Upper* Limits on Age, Not Lower Limits



Biblical Genealogy

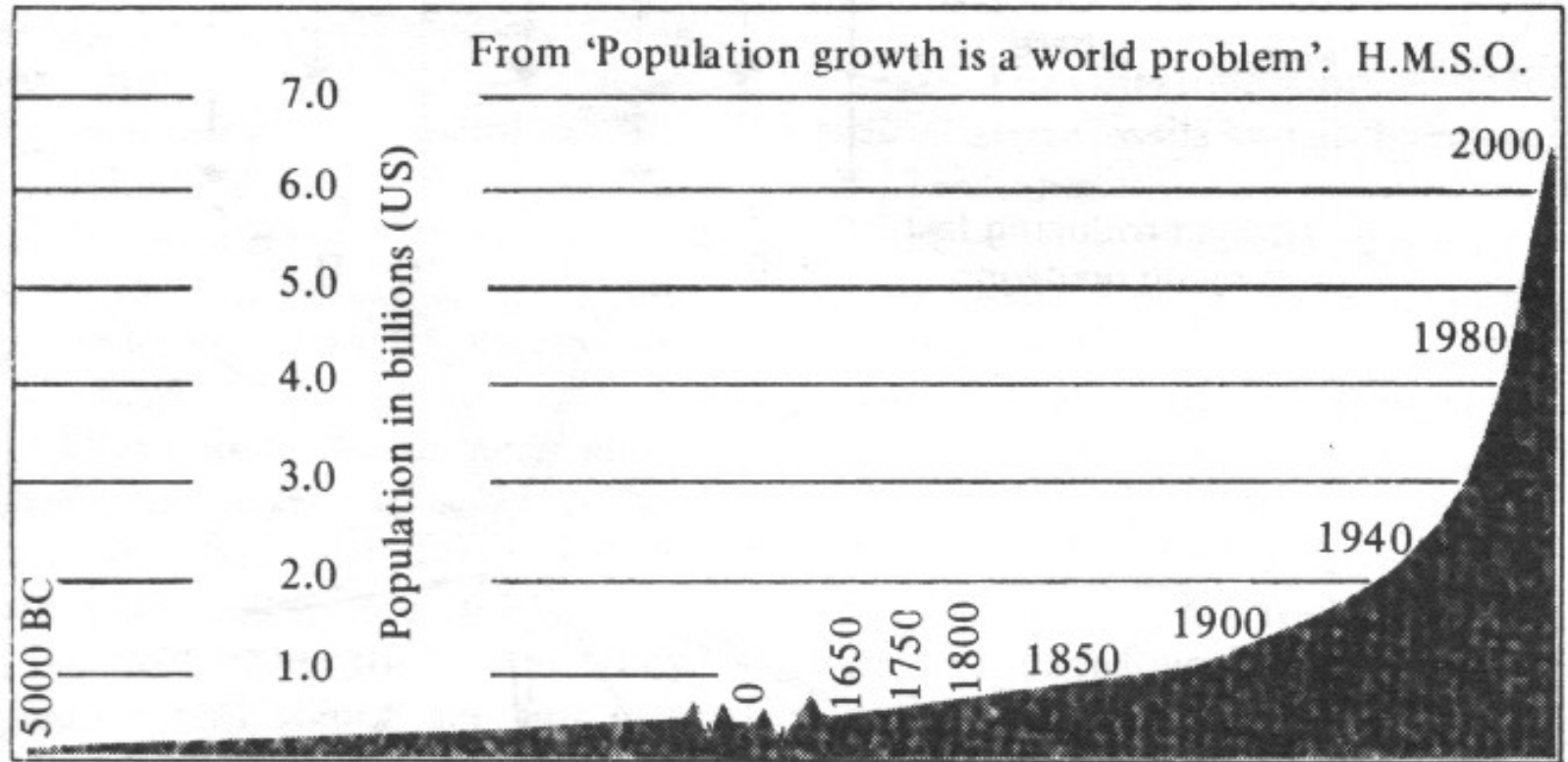




Human Population Estimates

- Today the population is about 8 billion
- At 2% growth per year, this number could have been reached in 1100 years
- At 1/2% growth per year, it would take 4000 years to reach this number
- These numbers are consistent with a young earth
- At 1/2% growth for 1,000,000 years, we would have 10^{2100} people
- Where are all the fossils of people (and animals)?

Human Population Growth Chart



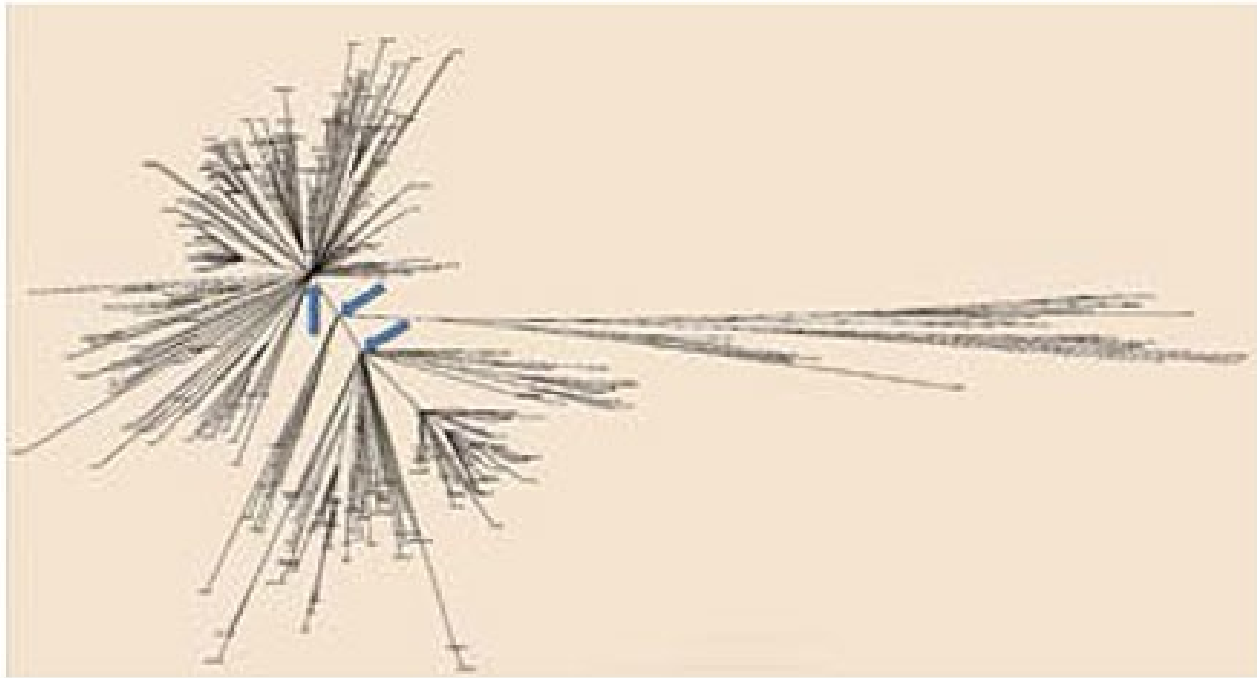
World population grew very slowly until 1650, but then increased from 545 million to 2.5 billion in 1950. By the mid 1980s it had reached about 4.5 billion – and is unlikely to be less than 6 billion in the year 2000.



Mitochondrial DNA Sequences

- mtDNA passed down through the mother
- Dr. Nathaniel Jeanson plotted hundreds of human mtDNA sequences onto a tree diagram (depicting lines of ancestry)
- The mtDNA stemmed from 3 central “trunks” or nodes instead of just one
- 3 trends from Jeanson’s data validate the biblical beginnings of mankind [3 wives of Noah’s sons]
- This comes from mother’s egg cell with 16,569 base pairs, ~1 mtDNA mutation every 6 generations

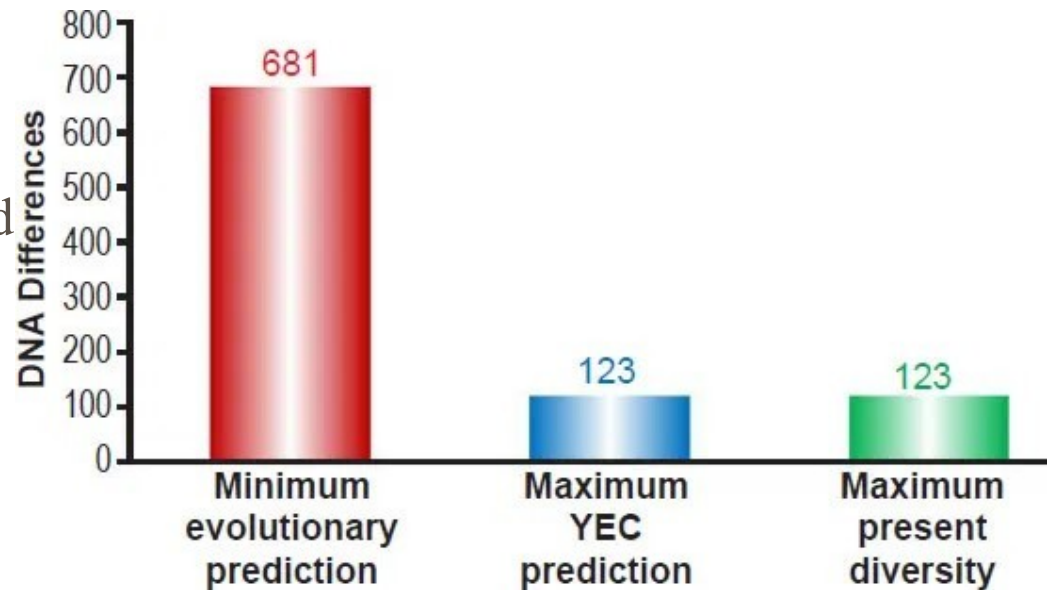
Human Mitochondrial DNA Tree Shows Three Central Nodes



The human mitochondrial DNA tree shows three central nodes, marked by blue arrows. These fit the number of expected mtDNA sequence differences between the wives of Shem, Ham, and Japheth. The longest branches represent the highest number of mtDNA differences between people groups, and these numbers match Bible-based predictions. Image adapted from supplemental Figure 1 from Jeanson's paper.¹ Used by permission of Answers in Genesis.

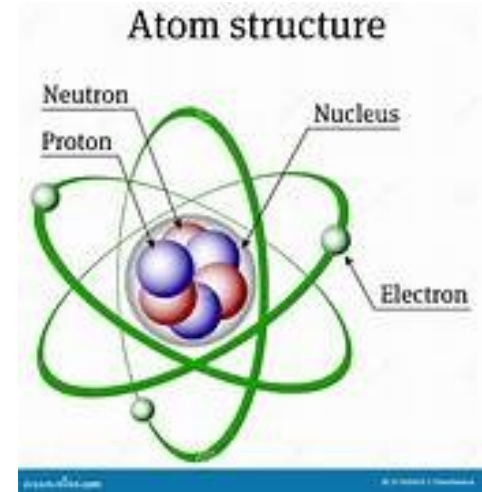
mtDNA Differences

Predictions of mtDNA diversity independent of ethnicity. Diversity in mitochondrial DNA (mtDNA) was predicted for the young-earth creation (YEC) timescale and the evolutionary timescale. The minimum mtDNA diversity predicted by the evolutionary timescale was represented by the height of the red bar, and the maximum mtDNA diversity predicted by the YEC timescale was represented by the height of the blue bar. Both predictions were compared to the maximum pairwise mtDNA difference in the published literature (green bar). As the image demonstrates, the YEC prediction clearly captured the maximum mtDNA diversity, but the evolutionary prediction far exceeded this number.



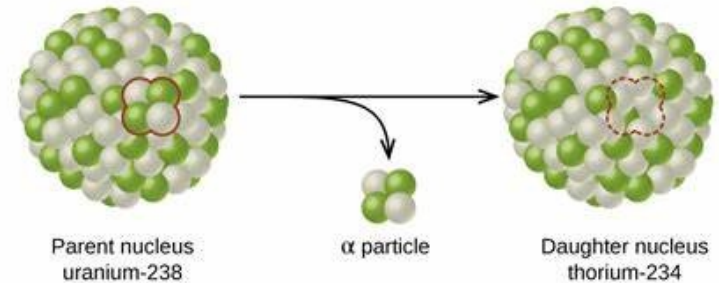
Radioactive Decay Basics

- Atoms are made up of **neutrons**, **protons**, and **electrons**
- The **nucleus** of an atom consists of neutrons and protons
- The number of protons in a particular nucleus is called the **atomic number**
- The sum of the neutrons and protons is the **mass number**.
- Atoms that have identical atomic numbers but different mass numbers are called **isotopes**
- Over time some isotopes are unstable and their nucleus undergoes decomposition to form a different nucleus
- The decomposition rate is called the **half-life**



Radiometric Dating Principles

- Potassium-Argon, Uranium-Lead, C14 methods
- Potassium (K) decays into Argon (Ar) over time at a known rate
- Rate is specified by the element's "half-life", i.e. the number of years for $\frac{1}{2}$ of the parent isotope to decay to daughter isotope
- Used to postulate dates of processes
- C14 dating is used for dating "young" objects, i.e. that were living or made from living materials
 - C14 half-life is 5730 years
 - Used for objects claimed to be $< 35\text{K}$ years old





Radiometric Dating's Fatal Flaws

- Dating results depend upon three assumptions:
 - The decay rate must be a constant – may be true
 - Must start with no, or known daughter component – very unlikely
 - It must be an isolated system, i.e. no external loss or addition of parent or daughter components can occur (i.e. no outside influence is allowed, such as heating, percolation of water, or exposure to cosmic radiation, etc.) – very unlikely over “millions” of years



Some Bogus Radiometric Dating Results

- Living snails have been dated as being 2300 years old with C14 dating
- Wood taken from growing trees has been dated by C14 dating to be 10,000 years old
- Hawaiian lava flows known to be less than 200 years old, have been dated by Potassium-Argon dating to be up to 3 billion years old
- Rock formations are arranged and dated by their fossil content, NOT on the basis of radiometric dating; and the fossil's dating is based on an assumed age -> NOT scientific, rather circular reasoning!



Geologic Ages –

Uniformitarianism vs. Catastrophism

- Long geologic ages supposedly provide the time for evolution to occur
- Depends on the assumption of Uniformitarianism
- This assumption is invalid - now recognized by most geologists
- Rock strata, fossil beds, and other geological systems have been formed rapidly and catastrophically
- One global cataclysm, hydraulic in nature
- Accompanied by great volcanic, tectonic, and other geophysical phenomena



Geologic Ages - 2

- World Book Encyclopedia defines ‘paleontology’ as:
 - “Paleontology (the study of fossils) is important in the study of geology. The age of rocks may be determined by the fossils found in them.”
- In another article in the same encyclopedia in an article on fossils, the same author writes:
 - “Scientists determine when fossils were formed by finding out the age of the rocks in which they lie.”
- Sounds like circular reasoning to me!



Geologic Ages - 3

- The only proof of evolution is based on the assumption of evolution
- The flood theory of geology, which was obvious and persuasive to the founders of geology, is again being recognized as the only theory that is fully consistent with the actual facts of geology



Anomalous Climates of Ancient World

- Today we have varied temperature zones - arctic, temperate, tropical
- Two apparent anomalies in most of the geologic column:
 - Shows a global temperate to subtropical zone
 - Worldwide ice age following global warm period
- Evidence found:
 - Well-preserved leaves in Antarctica
 - Many fossils buried in all parts of the world
- Consistent with a cataclysmic flood



Evidence for Young Earth

- Polystrate fossils
- Whale on its tail
- Helium in earth's atmosphere
- Dinosaur and man's footprints
- Soft tissue in fossils
- Earth's magnetic field
- "Fossil" meteorites
- Sea floor sediment accumulation

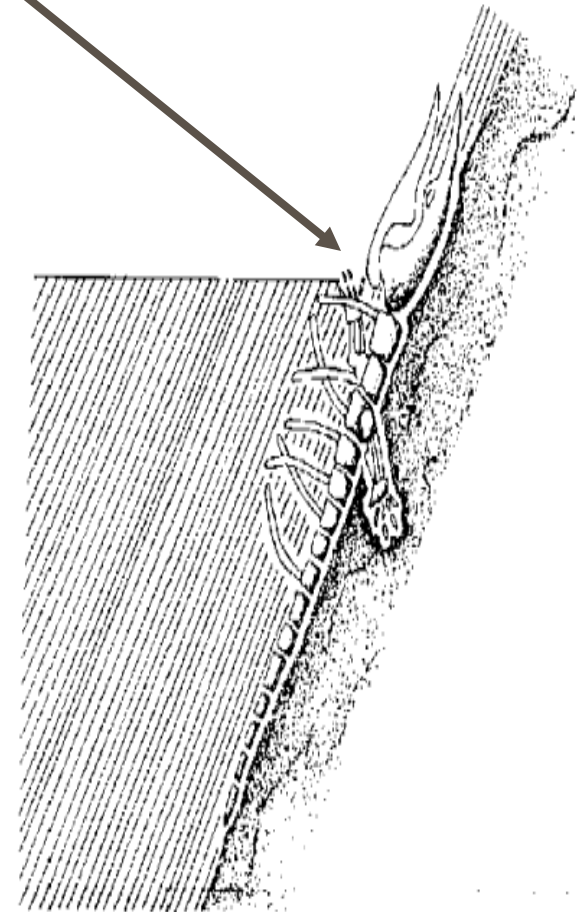
Polystrate Fossils

- Tree trunks cut through 2 to 3 layers of sedimentary rock
- Sedimentary layers are thought to require long periods of time (evolutionary), e.g. Grand Canyon
- Creationists believe these layers were deposited quickly under catastrophic conditions, recently



Whale on its Tail

- The Lompoc, CA diatomite bed and fossil whale, as found excavated in 1976
- Deposit was formed catastrophically, interring the whale almost instantaneously
- Uniformitarian geologists have steadfastly maintained that such diatomaceous-earth deposits require millions of years to form



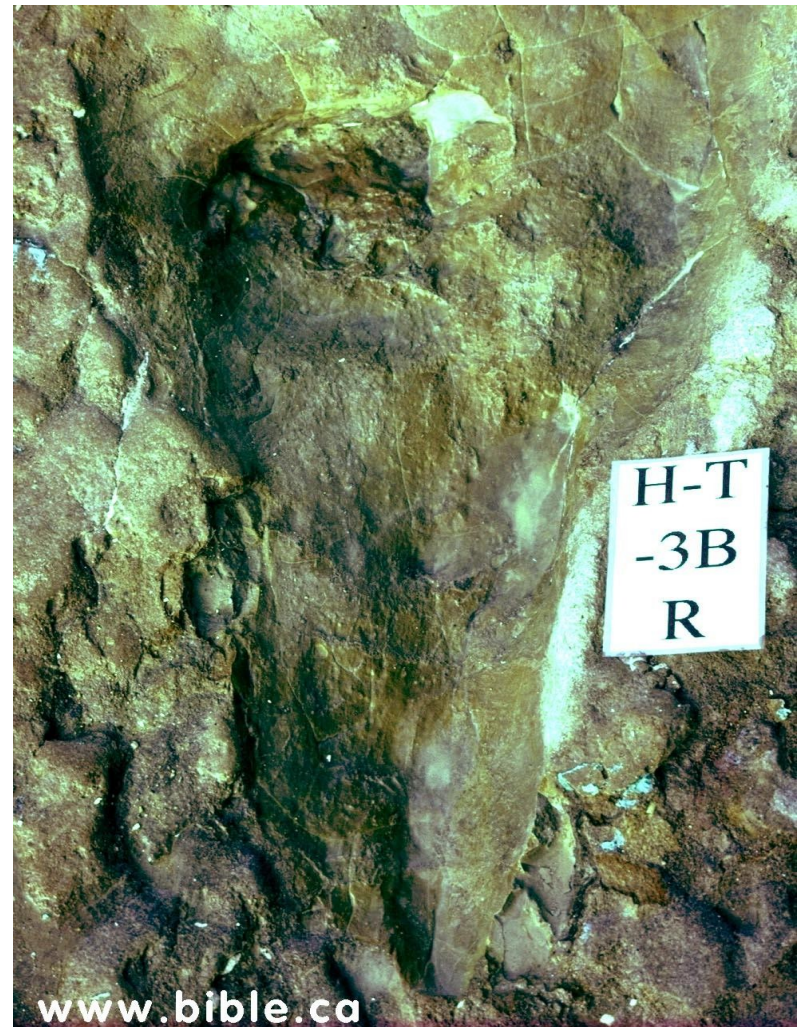


Helium in Earth's Atmosphere

- Helium generated by decay of Uranium atoms
 - Gas released into earth's atmosphere
 - U (Uranium) \rightarrow Pb (Lead) + HE (Helium)
- Helium from the sun
- Helium leaking from earth's core
- Atmosphere should contain one million times more HE than it does

Dinosaur and Man's Footprints

- Creation Evidences Museum in Texas
- Dinosaur tracks, man's footprints (and fossils)
- Earthworm fossil, hammer with wooden handle artifact found in same layer
- Dinosaur co-existed with man, e.g. **Ps. 104:26**; **Job 40:15-24**; **41:1-34**



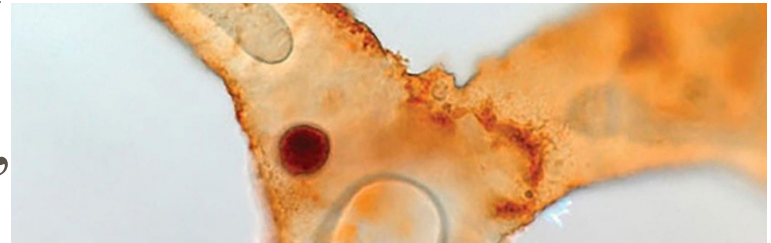


More on Dinosaurs

- Dinosaurs had small lungs (22 inches long)
- 200,000 lb. animal
- Small capacity lung
- Can't get enough oxygen
- 20% oxygen in air today
- Creation model, 23-25% oxygen and higher air pressure
- Dinosaurs can't survive in today's environment
- Per evolutionist "this destroys the theory of evolution"

Soft Tissues in Fossils

- Can “soft tissue” last millions of years?
- Paper by Dr. Mary Schweitzer in 2005 described intact blood vessels and red blood cells in a T. rex bone
- Rapid burial and drying limit microbe growth
- Collagen survival rate of 900,000 years max
- DNA survival rate of 650,000 years max
- Animal proteins discovered in fossils, e.g. dinosaur eggs in Argentina, Tyrannosaurus rex, Triceratops and duckbill dinosaur in Montana, mosasaurs in Kansas

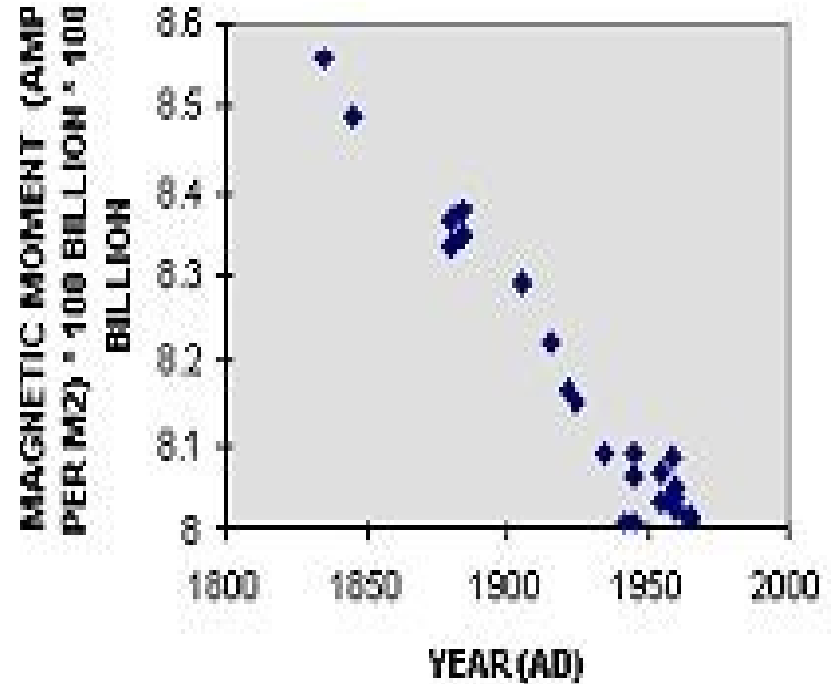


See <https://www.icr.org/soft-tissue-list>

Earth's Magnetic Field

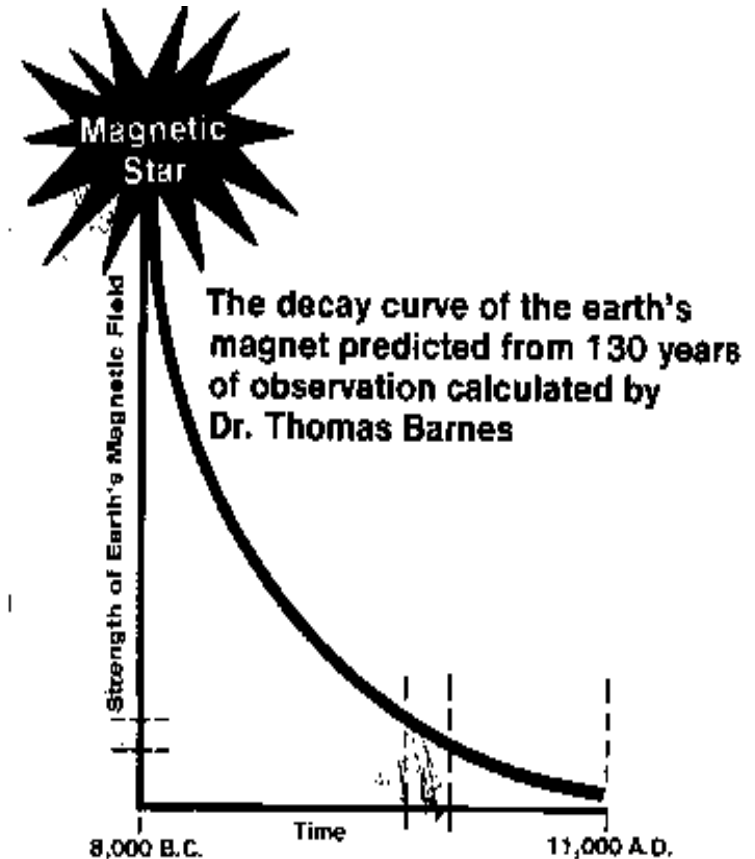
- Karl Gauss measured the magnitude in 1835 for the first time
- Measured for 160 years since
- Losing intensity exponentially, with a half-life of ~ 1400 years

EARTH'S MAGNETIC FIELD



Earth's Magnetic Field - 2

- 20,000 years ago the earth's magnetic field was too strong for enzymes to live
- Water is bi-polar and produces magnetic field
- All life functions based on electromagnetic field
 - e.g. eggs hatched with it (only)

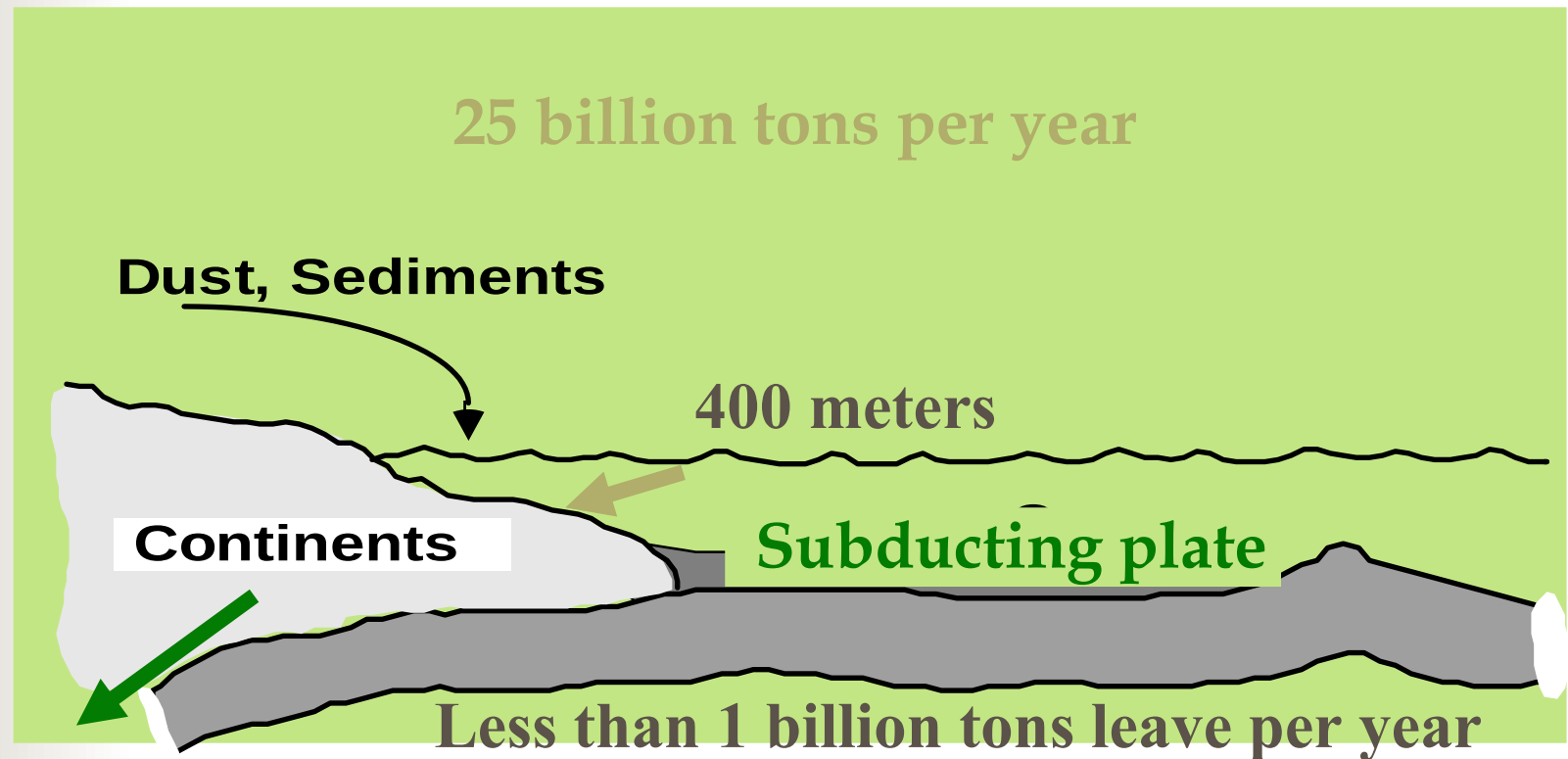




“Fossil” Meteorites

- Meteors streak across earth’s orbit and are captured and burned in the earth’s atmosphere
- Should find pieces of “fossil” meteorites in earth strata if the geological layers built up over billions of years
- Never found in Earth’s geological column
- Creationists believe that Earth’s strata were laid down rapidly during the Flood
- Meteorites have high nickel content
- Geologic column built up over many years, according to evolutionists (assumes Uniformitarianism)

Seafloor Sediments Accumulate Too Fast



Less than 12 million years to accumulate



Evidence for Young Universe

- Moon dust
- The solar janitor
- Short-period comets
- Smoldering embers
- etc.



Moon Dust

- Dust builds up on furniture, buildup proportional to time since last dusting
- Three assumptions:
 - Starting conditions
 - Rate of dust accumulation constant?
 - No tampering, e.g. removal of dust
- Moon is susceptible to cosmic dust
 - Will collect on all sizable bodies - moon, earth, etc.
 - Scientists can use high-altitude balloons to measure amount of cosmic dust currently falling
- No cosmic dust found on earth of any significance



Moon Dust - 2

- Expected to find some on moon because of fewer disturbances (no erosion)
- Trip to moon in July 1969
 - Depth of cosmic dust feared by astronauts
 - No erosion, no life
 - Moon assumed to be 4.58B years old
 - Dust could be up to 50 to 180 feet deep
 - Neil Armstrong's greatest fear - sink into moon dust
 - Actually he couldn't pound American flag into moon rock
 - Only a few thousand years of dust on the moon
 - \$1B spent on lunar lander because of dust theory
- Powerful testimony that earth is very young



The Solar Janitor

- Poynting-Robertson Clock
 - Photons emitted by sun strike objects in space
 - Objects lose speed, falling into the sun
 - Small particles fall first
 - Cosmic dust still in abundance in space
 - indicates short age of the universe
 - Expect to find dispersion in meteor stream
 - sorting by particle sizes
 - no dispersion found
- Stars still surrounded by clouds of dust & gas
 - Indicates young age



Short-Period Comets

- Objects orbiting around the sun
 - With visible glowing, visible shroud of gas
 - Trail burned off when it passes close to sun
- Many short-lived comets observed
 - Disappear during close approach to sun
 - Ten comets disappeared this past century
- Average life span of comet is 1500 to 10K years
- There should be no short-lived comets left
 - But, there is an abundance of them



3 possible answers, per evolutionists

- Long period comets periodically captured by Jupiter
 - thereby becoming short period comets
 - facts don't add up
- Comets originate in asteroid belt
 - orbits of comets don't match this theory
 - physical makeup of asteroids and comets is totally different
- Comets come from erupting volcanoes on Jupiter
 - needs great force



Comets crumble too quickly

Comet

Losses

Sun



Smoldering Embers

- Jupiter exploration in 1979
- Moon “Io” volcano eruption observed
 - Should have been dormant after 4.5B years
 - Sent more than 100 miles into space
- Earth is only “known” geologically active body in solar system
- Short-lived radiation found on the moon
 - U236 and Th230 isotopes
 - Indicate life of few thousand years of moon
- Turbulence and instability in rings of Saturn



The World is Young After All

- The Bible says so
- Population statistics indicate it
- Mitochondrial DNA (mtDNA) sequences
- Physical processes support it
- Geologic “ages” show it
- 90% of earth processes shows it
- 90% of universe processes shows it
- Explanation of other 10% being sought

Keeping Score

Which Model Fits the Evidence Best?

	<u>Creation</u>	<u>Evolution</u>
Age of the Earth/Universe	★	
TOTAL =	10	0



Conclusions

- Laws of science consistent with Creationism
- Signs of design in the universe
- The probability of life from non-life is zero
- Abrupt appearance of fully-formed animals
- The missing links are still missing
- Man did not evolve from apes
- Catastrophism explains the “geologic column”
- There is no credible evidence for evolution!
- Science supports Creationism



**Thank you
for your
attention!**

**What I see convinces me God exists.
What I cannot see, confirms it.**

Albert Einstein

Dr. Heinz Lycklama

heinz@osta.com

HeinzLycklama.com/creation



Creation Organizations

- ICR – Institute for Creation Research
 - www.icr.org
 - Books by Henry Morris (founder), e.g.
 - The Genesis Flood
 - The Genesis Record
 - The Modern Creation Trilogy
 - Acts and Facts articles on Creation
- Answers in Genesis
 - www.answersingenesis.org
 - Founded by Ken Ham
 - Books, seminars, articles on Creation



Creation Organizations - 2

- Creation Evidence Museum
 - www.creationevidence.org
 - Dinosaurs and human tracks
- Creation Moments
 - www.creationmoments.com
 - Radio spots
- Creation Research Society
 - www.creationresearch.org
 - Publication of peer-reviewed creation articles

Creation Organizations - 3

- Center For Scientific Creation
 - www.creationscience.com
 - “In The Beginning” Book by Walt Brown, Ph.D.
- Creation Science Evangelism
 - www.drdino.com
 - Videos, seminars
- Discovery Institute
 - www.discovery.org
 - Intelligent Design “Think Tank”



Important Books

- The Genesis Record, Dr. Henry Morris
- The Genesis Flood, Dr. John Whitcomb & Dr. Henry Morris
- The Collapse of Evolution, Scott Huse
- The Lie: Evolution, Ken Ham
- Refuting Evolution, Dr. Jonathon Sarfati
- Evolution: The Fossils Still Say No!, Dr. Duane Gish
- Scientific Creationism, Dr. Henry Morris
- Starlight and Time, Dr. Russell Humphreys
- Dinosaurs by Design, Dr. Duane Gish



Important Books - 2

- The Young Earth, Dr. John Morris
- Science and the Bible, Dr. Henry Morris
- Tornado in a Junkyard, James Perloff
- In The Beginning, Dr. Walt Brown
- Evolution: A Theory in Crisis, Michael Denton
- Darwin on Trial, Dr. Phillip Johnson
- Darwin's Black Box, Dr. Michael Behe
- Design Inference, Dr. William Dembski