

God's Incredible Creatures

Formed by Evolution OR Created/Designed by God?

Dr. Heinz Lycklama

heinz@osta.com

HeinzLycklama.com/creation



“The world in which we live is truly an amazing and wondrous place.”

Scott Huse, *The Collapse of Evolution*



God's Incredible Creatures

- What does the Bible say about the Creation of Creatures?
 - Gen. 1: 11(1), 12(2), 21(2), 24(2), 25(3)
 - “according to its kind” used 10 times
- Let's look at some of these Creatures
 - Any evidence that creatures evolved?
 - Do creatures appear to be designed?
 - By whom?
- Is Evolution really true?
- Is God the Designer/Creator of these incredible creatures?

By Chance, Law or Design?





Incredible Creatures & Design

- Cheetah, Giraffe
- Octopus, Weddell Seal
- Archerfish, Decoy Fish, Anglerfish
- Cicada Insect, Sea Slug, Gardening Ants
- Symbiotic Relationships
- Migratory Feats
- Incredible Insects
- The Living Cell
- Human Eye, Trilobite Eye
- The Design Argument
- Woodpecker, Butterfly, Bombardier Beetle
- Can Evolution Explain This?

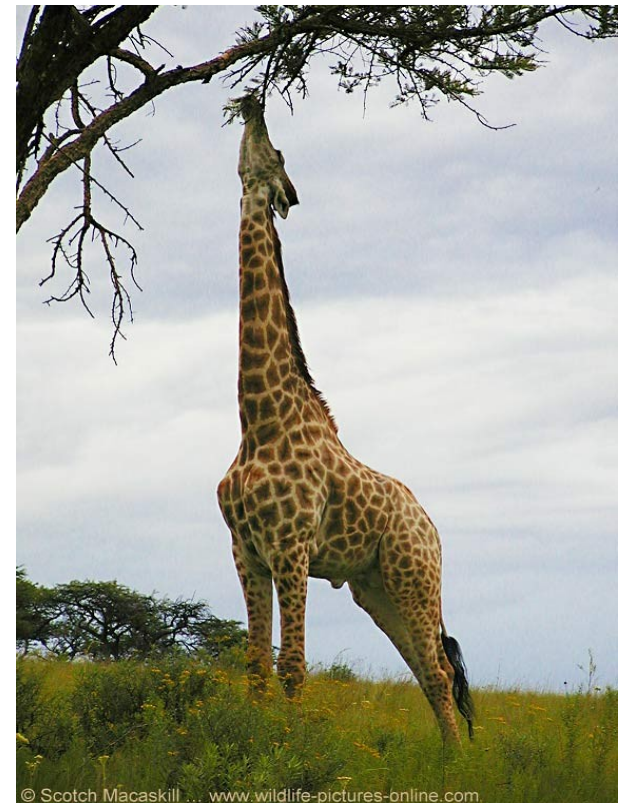
The Cheetah

- Cheetah cat can run at up to 70 mph over a distance of 700 yards or more
- Cheetah can reach 45 mph in 2 seconds!
- Cheetah is the fastest land animal



The Giraffe

- Ten ft. high at the shoulder
- Eight foot neck
- Seven neck bones
- Huge heart to deliver blood to the brain
- Large lungs (8 * human)
- Slow air intake



Giraffe - 2

- Reinforced artery walls
- By-pass and anti-pooling valves
- Web of small blood vessels
- Pressure-sensing signals
- Engineered for survival
- Defies explanation by evolution!



Eight-Armed Octopus

- Eight-armed, ink-shooting octopuses
 - Jet-propelled and fast swimmer
 - Shoots ink to create smoke screen and dull a predator
 - Can re-grow an arm if it loses/eats one



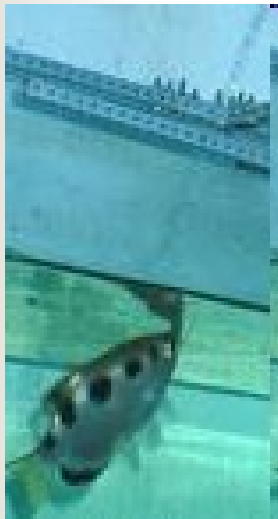
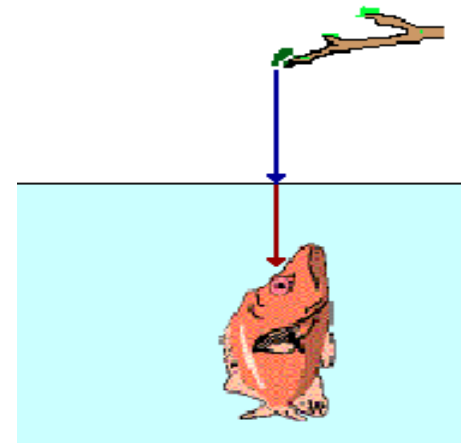
The Weddell Seal

- Weddell seals that can remain underwater for 45 minutes
- Dive to depths of 1500 feet



The Archerfish

- Archerfish that can shoot water 15 feet into the air and hit a bug
- Mouth at surface
- Eyes underwater



Decoy Fish

- Lives in waters near Oahu, Hawaii
- Uses dorsal fin as a lure
 - Goes up and appears to be a separate smaller fish, complete with “mouth” and “eye”
 - Ceases its gill movements
 - Stops breathing
 - Lure turns deep red color
- Part attaching lure to fish body becomes transparent
- Moves decoy side to side, remaining still
 - “Mouth” opens and closes
- Fish snaps up victim when within reach





Anglerfish

- A - uses “lure” at end of moveable “fishing pole” suspended over mouth
- B – has “fishing rod” coming out of its back with luminescent “bulb” at end of it
- C – deep-sea angler has “light bulb” hanging from roof of its mouth (dangling)
- D – simulates movement of real shrimp
 - May move in quick backward-darting motion
 - If “bait” gets nipped off, grows back “bait” within a few days, fully replaced within two weeks

Cicada Insect

- About 2500 species exist
- One (magicicada) can live underground for 13 to 17 years
- Does not bite or sting and not a pest
- Make a real racket when they emerge





The Sea Slug

- Lives along seacoast within tidal zone
- Feeds primarily on sea anemones
- Anemones are equipped with 1000's of small stinging cells on their tentacles
 - Cells explode at slightest touch
 - Plunge poisoned harpoons into “would-be” intruders
 - Speared intruder is paralyzed and drawn into the anemone's stomach to be digested



The Sea Slug - 2

- Sea slug is not stung
- Undigested stinging cells are swept along through ciliated tubes that are connected to the stomach and end in pouches
- Stinging cells are arranged and stored in the pouches to be used for sea slug's defense!
- Whenever attacked, sea slug defends itself using the stinging cells
- Defies evolutionary explanation!



Gardening Ants

- Bull's Horn Acacia tree of South America furnished with large hollow thorns
 - Inhabited by ferocious stinging ants
- Small bumps on tree supply food to ants
- Tree receives complete protection from all animal predators and plant competitors
- Ants viciously attack all intruders
- Ants are gardeners and nip off any green shoot that shows its head near their tree
- When all ants are removed from one of these trees, tree dies within 2 to 15 months

Cleaning Symbiosis

- Certain fish feed on smaller fish and shrimp
- Their mouths become littered with debris and parasites
- Larger fish pay visit to “cleaning station” and opens its mouth and gill chambers
- Little “cleaner” fish and shrimp swim in and “do their job”
- “Win-win” for both parties
- Also practiced by Egyptian plover bird in cleaning out parasites from Nile river crocodile



Water Beetle

- Defends against enemies by secreting a detergent substance from a gland
- Propels beetle forward quickly out of immediate danger
- Detergent causes the surface tension of water to break down
- Pursuing insect sinks into the water



O Lord, how manifold are Thy works! In wisdom hast thou made them all: the earth is full of Thy riches” Ps. 104:24.

Migratory Instincts



■ White-throated warbler

- Summers in Germany
- Winters in Africa
- Parent birds take off for Africa at end of Summer as young birds become more independent
- Young birds take off a few weeks later, flying instinctively across 1000's of miles of unfamiliar land and sea to rejoin their parents

■ Brains of birds have inherited knowledge

- Can tell latitude, longitude and direction by the stars
- Have “calendar”, clock and navigational data

Alaskan Golden Plover

- Born in Alaska
- 26 days of incubation
- After few months, parents fly to Hawaii
- 4500 Km from Alaska to Hawaii
- Average weight of bird is 140 grams
- Put on 70 more grams of weight as fuel





Alaskan Golden Plover - 2

- Takes 88 hours to fly to Hawaii
 - At a rate of 51 Km/hour
- All over open water, without a break
- Takes 250,000 wing flaps
- Fly through fog, rain, sunshine, starlight, overcast skies
- Requires 0.6% of body weight per hour
 - All fuel exhausted in 72 hours
 - Flying in V-formation saves 22% of energy

Other Migratory Feats

- Canadian Golden plover bird
 - Travels 8000 miles south from Hudson Bay
 - Crosses 2000 miles of sea from Nova Scotia to Caribbean countries
 - Winters in Argentina
 - Returns by way of Central America and the Mississippi Valley
- Barn swallow
 - Migrates 9000 miles from Northern Canada to Argentina
- Arctic tern migrates 14000 miles, pole to pole and back
- Others – whales, fur seals, bats, salmon, turtles, etc.



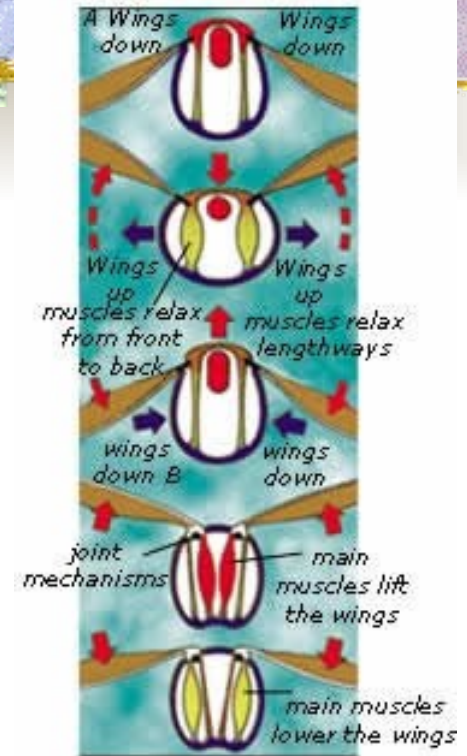


The Evolutionist is Baffled!

- Remarkable migratory abilities cannot evolve piecemeal through mere chance
- Requires directing intelligence
- Migratory instincts are useless unless perfect
- Navigating perfectly across only half of an ocean does not help
- These animals were carefully created and designed with these instincts

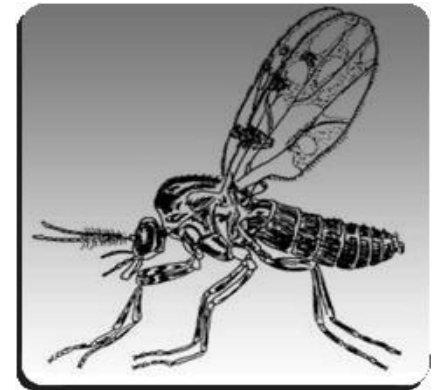
Insect Flight

- Insects are the only invertebrates able to fly
- Wing of an insect:
 - Capable of very strong sculling action
 - Capable of elevation, depression, fore and aft movement, pronation and supination
 - Capable of changes in shape by folding and buckling
- Many insects can hover, or fly backwards or sideways, or rotate about the head or tail by using unequal wing movement



Special Insects

- Some insects (e.g. bees, wasps, flies) have small wing area
- Honeybee needs small wing for bee hive
 - Very rapid wing beat rate of 200 per second
- Midge has wing beat rate of 1046 per second
- Amazing engineering wonders!



“The heavens declare the glory of God; and the firmament sheweth his handywork.” Ps. 19:1.

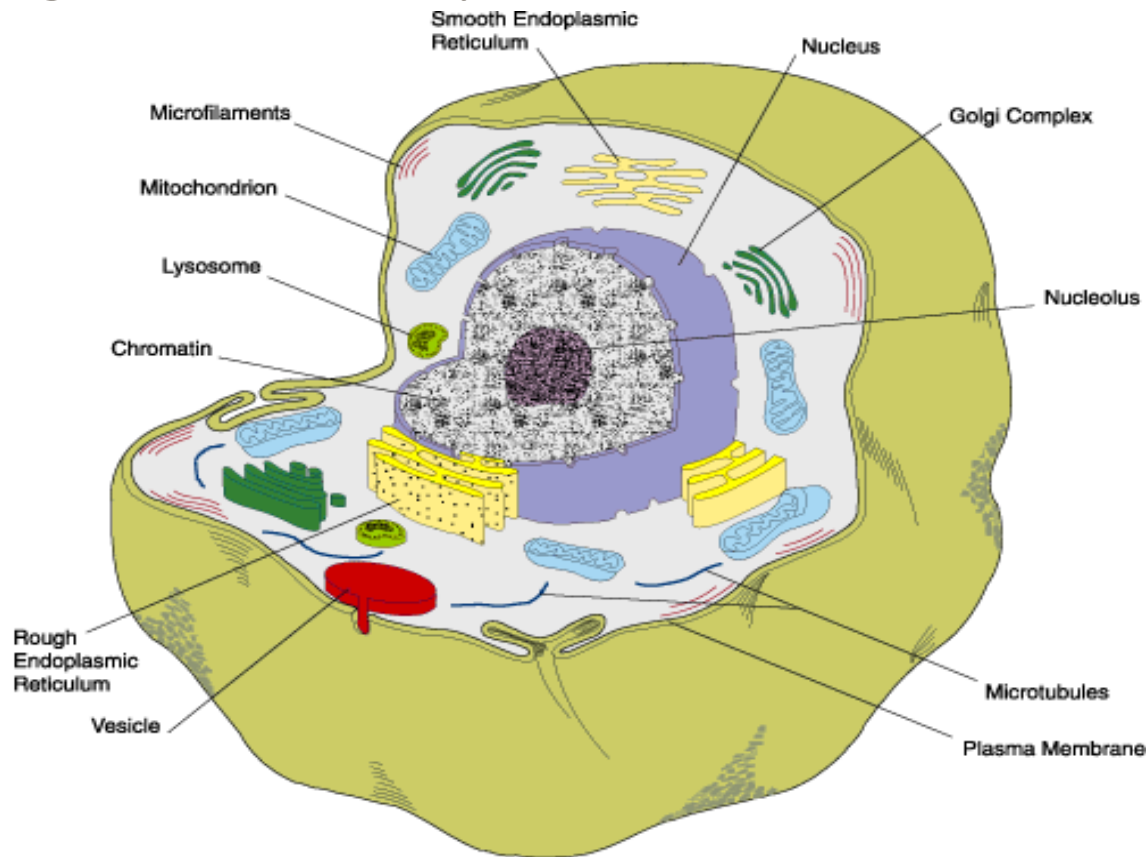


More Amazing Creatures

- Peregrine falcons that can swoop down on their prey at 150 mph
- Iron-eating bacteria that live 10,000 feet beneath the earth's surface
 - Endure pressures of 3,000 psi
 - Endure scalding temperatures of 185 deg. F.
- Many highly complicated and intricate “adaptations” which completely defy evolutionary explanation
 - Ingenious design and purposiveness [Teleology]
- The incredible mysteries of the human body

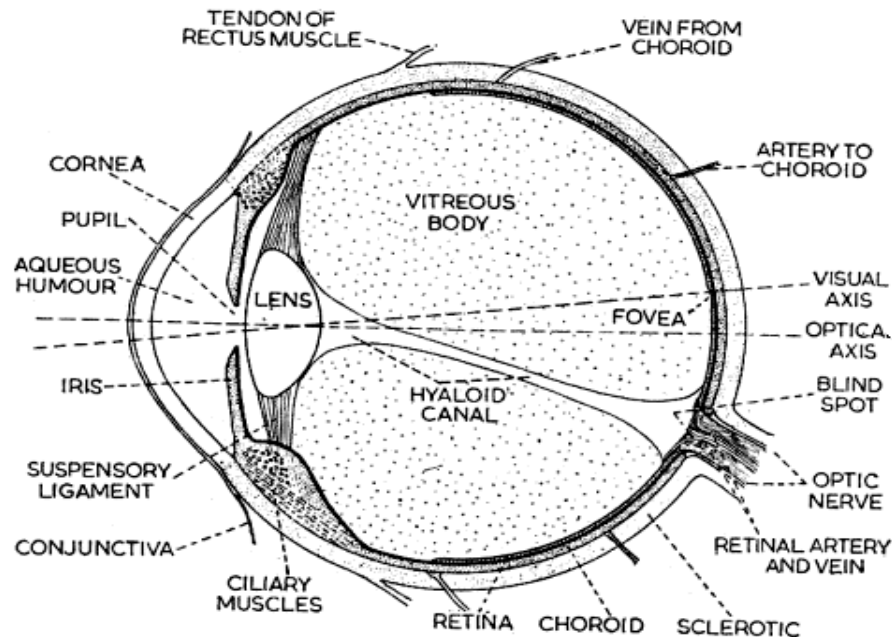
Cell Structure

- Average human body contains 75+ trillion cells



The Human Eye

- Staggering complexity
- Can't be explained by step-by-step random mutation and selection





The Human Eye - 2

- Automatic aiming, focusing, aperture adjustment
- Functions from almost complete darkness to bright sunlight
- Can see a fine hair
- Makes about 100,000 separate motions per day
- Provides us a continuous series of color stereoscopic pictures
- All performed without complaint
- Carries out its own maintenance while we sleep



The Human Eye - 3

- So complex and sophisticated that scientists do not fully understand how it functions
- Requires sophisticated synchronization of complex structures and mechanisms
- The eye would be useless unless fully developed
- Piecemeal evolution of the human eye is a completely unreasonable notion
 - Probability of chance formation is 1 in 10^{266}



Human Eye - 4

- “To suppose that the eye, with all its inimitable contrivances for adjusting the focus to different distances, for admitting different amounts of light, and for the correction of spherical and chromatic aberration, could have been formed by natural selection, seems, I freely confess, absurd in the highest possible degree. ... The belief that an organ as perfect as the eye could have formed by natural selection is more than enough to stagger anyone.”

Charles Darwin



More Than The Human Eye

“My last doubt concerns so-called parallel evolution. ... Even something as complex as the eye has appeared several times; for example, in the squid, the vertebrates, and the arthropods. It’s bad enough accounting for the origin of such things once, but the thought of producing them several times makes my head swim.”

Frank Salisbury

“Examination of the eye is a cure for atheism.”

Sturmius

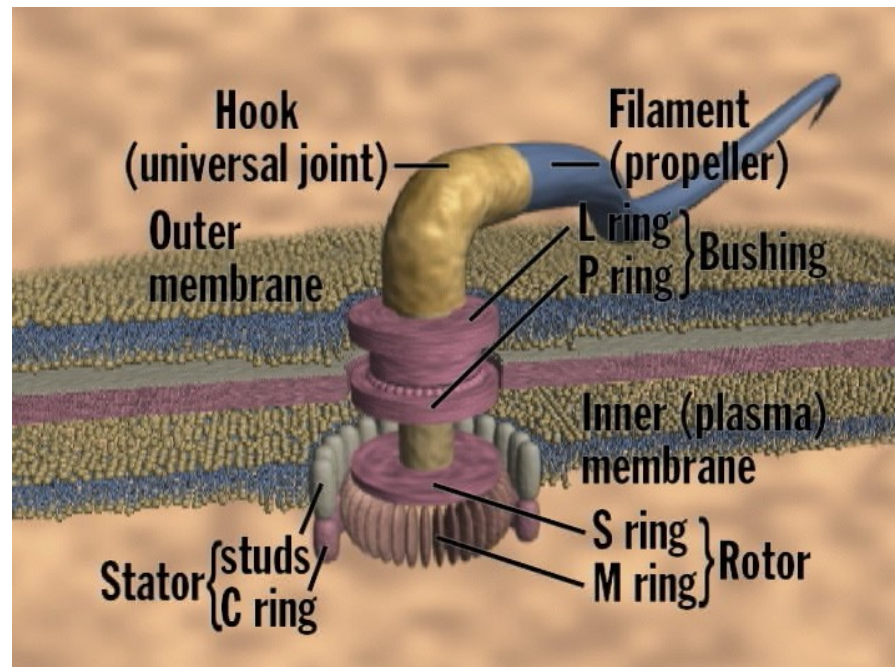
The Trilobite Eye



- Trilobite now extinct
- Eyes composed of inorganic calcite
 - Trilobite lenses preserved in fossil record
- Double lens design [*human eye is single lens*]
 - 100 to 15,000 lenses in each eye
- Could see underwater without distortion
- Implicit knowledge of Abbe's Sine Law, Fermat's Principle, and other principles of optics inherent in the design of these lenses
- Carefully designed by a knowledgeable physicist!

Darwin's Black Box

- Behe showed that the cell, Darwin's Black Box, is filled with irreducibly complex molecular machines that could not be built by natural selection



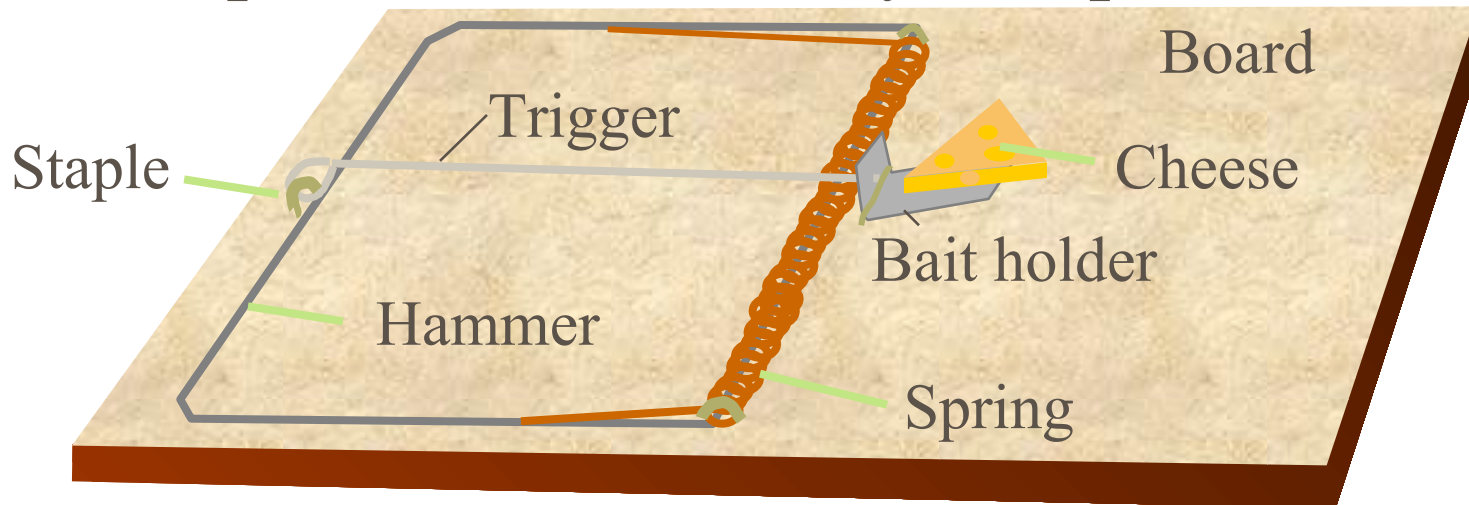


Darwin's Black Box - 2

Over 100 molecular motors are now known to exist inside the cell with very specific analogies to human designed motors.

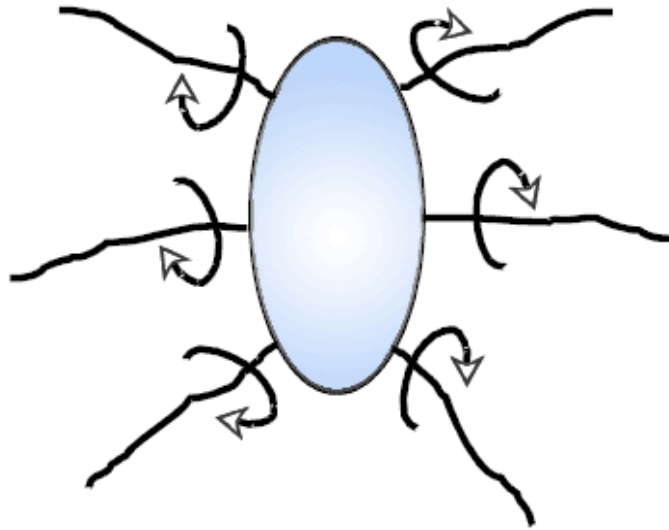
Behe's Insight

- Michael Behe contends that when we look at the protein machines that run cells, there is a point at which no parts can be removed and still have a functioning machine. He called these machines “irreducibly complex” (IC)
- We encounter irreducibly complex devices in everyday life. A simple mouse trap is an example of an irreducibly complex device:

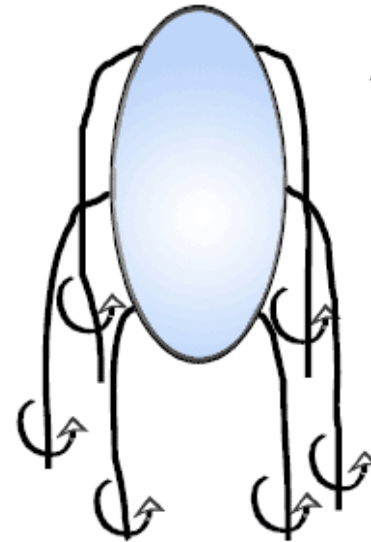


Bacterial Motors

Certain bacteria swim by means of rotary *flagella*. These are driven by reversible electric motors!



one direction - stationary

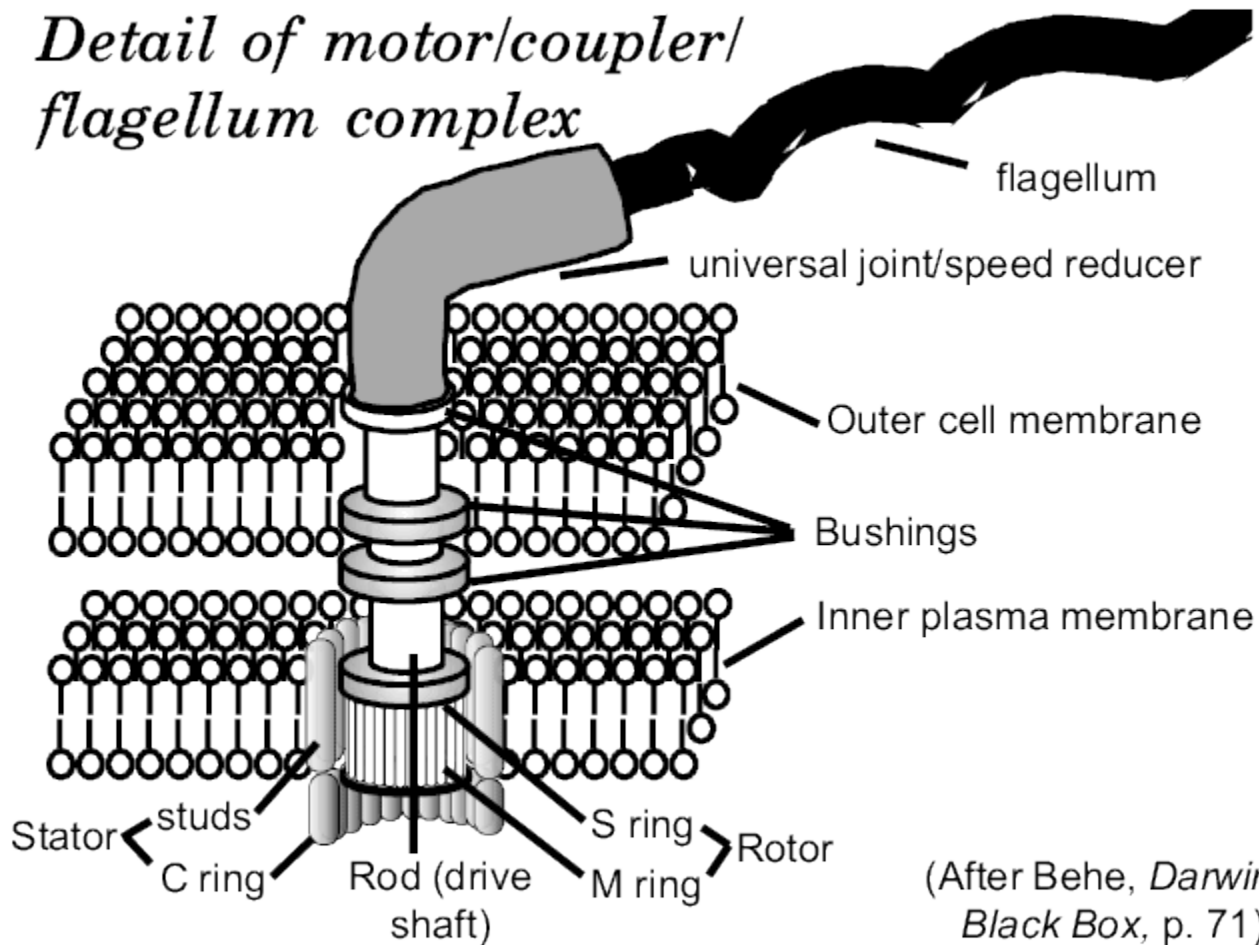


opposite direction -
forward motion

courtesy Dr. Richard Lumsden

Bacterial Motors - 2

Detail of motor/coupler/ flagellum complex



(After Behe, *Darwin's Black Box*, p. 71)



More God's Incredible Creatures!

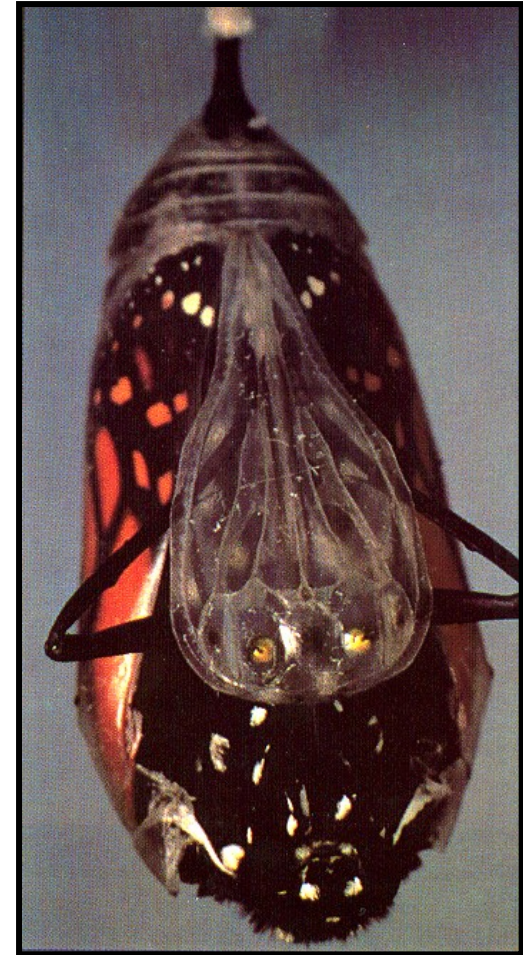
- Woodpecker
- Metamorphosis of a Butterfly
- Bombardier Beetle

From slides [9-30] in the file called
“Creation, Evolution and Biology.ppt”
produced by Dr. Gish, ICR

“Overwhelmingly strong proofs of intelligent and benevolent design lie around us ... the atheistic idea is so nonsensical that I cannot put it into words.”

Lord Kelvin, *British physicist*

Metamorphosis of the Butterfly





Evolution Cannot Explain

- More features of God's incredible creatures:
 - Visual beauty – where from? why?
 - Exhibited by fish deep in the sea
 - Mimicry – how did it develop?
 - One type of organism imitates/mimics another type
 - e.g. spiders disguising as ants (8 legs vs. 6 legs)
 - Angler fish
 - Convergence (similar organs/structures)
 - Sonar systems in bat and porpoise
 - Wing mechanisms “evolved” separately in insects, bats, flying reptiles, birds
- No evolutionary mechanism can explain this!



References

- Darwin's Black Box, Dr. Michael Behe
- Incredible Creatures That Defy Evolution III, Dr. Jobe Martin



God' Creatures Are Indeed Incredible!!

- Designed & Created by God

Dr. Heinz Lycklama

heinz@osta.com

HeinzLycklama.com/creation